

Blood Pressure Cuffs  
For Every Clinical Need

# SunTech® *Durable BP Cuffs*

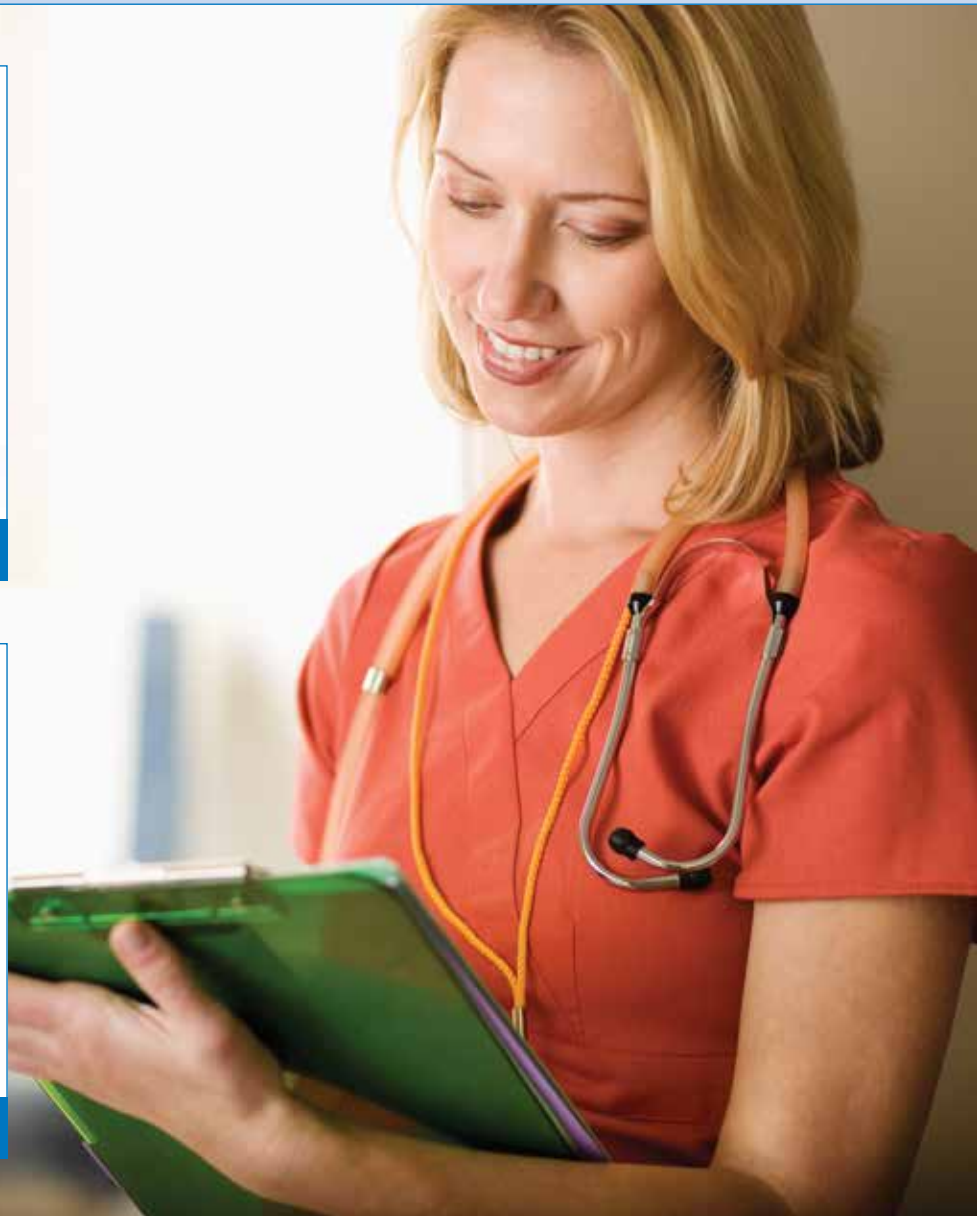
Engineered For Reliability & Patient Comfort



All-Purpose Durable™ BP Cuff



One-Piece Durable™ BP Cuff



+ Twenty-five years of expertise in  
BP measurement technologies

+ Unique tapered tail promotes  
proper fit & accuracy

# SUNTECH MEDICAL® DURABLE BP CUFF LINE

Accurate measurement of blood pressure is critical in patient care and multiple factors can impact results, specifically, which blood pressure cuff is selected. When used with automated BP monitors, the cuff is the sensor. *SunTech Medical*, with twenty-five years of expertise as the leader in BP measurement technologies, understands this challenging and complex clinical problem. That is why SunTech Medical®'s Durable BP Cuff™ Line is designed with a tapered end and high quality nylon to provide an outstanding combination of patient comfort, longevity and durability for the widest variety of clinical applications and environments.

## + Clinical Need

### Easy Application & Fit

### Patient Comfort

### 100% Tested for Reliability

### Meets Regulatory Standards

### Multiple Configurations

### Latex-Free/PVC-Free/DEHP-Free

## + Solutions

*SunTech's* unique tapered tail design makes the durable cuff easier to wrap and apply versus regular straight cuffs. Color coded sizes and range markers support proper cuff sizing, fit and accuracy.

The unique tapered tail design improves patient comfort by eliminating sharp corners that can irritate patients during wear.

Each and every durable cuff is leak tested to provide value and reliability.

*SunTech's* durable cuffs are engineered to meet the AHA, AAMI-SP10, and MDD regulatory guidelines for results you can trust.

Single or dual tube configurations with various connector options provide needed flexibility to integrate with most healthcare facility's equipment.

100% latex-free, PVC-free and DEHP-free promotes patient safety.



## WHICH DURABLE BP CUFF IS RIGHT FOR YOU?

### All-Purpose Durable BP Cuff™

- Durability and longevity in a traditional design
- Tapered design enhances patient comfort
- Engineered to stand up to demanding clinical environments

+ **Traditional Design** // Highly durable nylon material with removable bladder design allows for cleaning to reduce cross contamination.

+ **Rugged Construction** // Sewn construction adds strength for repeated inflations, providing value with a long-lasting reusable cuff solution for all clinical applications. Backed up with a two-year warranty.



### One-Piece Durable BP Cuff™

- One-piece construction provides an affordable solution to increasing cost pressures
- Ideal when infection control is paramount

+ **Easy Cleaning & Disinfecting** // One-Piece design makes cleaning and disinfection simple, helping to minimize cross-contamination without compromising longevity.

+ **Value** // Single piece design and construction is durable enough for use with multiple patients, helping to lower the cost per use.



## + Ranges



**Infant**  
8-13 cm



**Child/  
Child Long**  
12-19 cm



**Small Adult/  
Small Adult Long**  
17-25 cm



**Adult/Adult Long**  
23-33 cm



**Large Adult/  
Large Adult Long**  
31-40 cm



**Thigh**  
38-50 cm



## + Symbols



Arm circumference.



Product in compliance with Council Directive 93/42/EEC Medical Devices Directive.



Product contains no latex material.



Product contains no PVC (polyvinyl chloride) material.



Artery symbol and arrow should be placed over brachial or femoral artery.



Index Line.



Cuff index line must fall within range markings for an accurate measurement.

## + Durable BP Cuff Line Specifications:

Cuff Component	Material	All-Purpose	One-Piece
Cuff Shell	Nylon, 200 Denier	•	•
Hook	Nylon	•	•
Loop	Nylon	•	•
Thread	Nylon	•	
Bladder	Nylon, 200 Denier	•	
Bladder Tubing	TPE (thermoplastic elastomer)	•	•
Bladder Nipple	Polyurethane	•	•
Outer Label	Polyester	•	
100% Latex-free		•	•
100% PVC-free		•	•
100% DEHP-free		•	•
Regulatory Requirements			
Meets AHA, AAMI-SP10 Guidelines		•	•
In compliance with Council Directive 93/42/EEC Medical Devices Directive		•	•
Meets ISO 10993 standard		•	•

  
**SunTech Medical**<sup>®</sup>  
Brilliant Blood Pressure Solutions<sup>™</sup>

SunTech Medical, Inc.  
507 Airport Boulevard, Suite 117  
Morrisville, NC 27560-8200 USA  
Tel: + 1.919.654.2300  
1.800.421.8626  
Fax: + 1.919.654.2301

www.SunTechMed.com

SunTech Medical, Ltd.  
Oakfield Estate  
Eynsham, Oxfordshire  
England  
Tel: + 44 (0) 1865.884.234  
Fax: + 44 (0) 1865.884.235

www.SunTechMed.com

SunTech Medical, Ltd.  
2/F of Building A, Jinxiongda Technology Park  
Guanlan, Bao'an District Shenzhen, 518110, PRC  
Tel: + 86-755-2958 8810  
+ 86-755-29588986 (Sales)  
+ 86-755-29588665 (Service)

Fax: + 86-755-2958 8829

www.CN.SunTechMed.com

