

# ONLY ONE

**NEW & IMPROVED**

 **Face-Cradle**<sup>®</sup>  
Prone Support System



- Simple set-up, “no waiting”
- Fully adjustable cushion set accommodates most adult head sizes
- Greater patient stability
- Greater visibility of patient’s eyes & ET tube

**“When vision matters...  
...you have control”**



**Fully Adjustable**

*The Face-Cradle is for use in prone position surgeries offering the clinician **greater visibility** of the patient’s face.*

[www.mercurymed.com](http://www.mercurymed.com)

11300 - 49th Street North • Clearwater, Florida 33762-4807 USA

Tel. (800) 237-6418 / (727) 573-0088 • Fax (800) 990-6375

**MercuryMedical**<sup>®</sup>

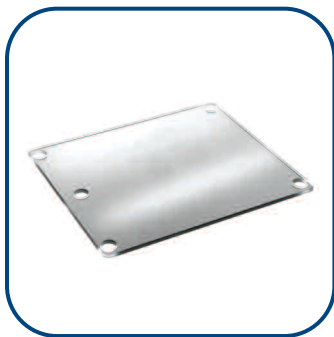
Your Need ... Our Innovation<sup>®</sup>

# ONLY ONE

**NEW & IMPROVED**



The Face-Cradle System consists of a mirror, a base and a soft, contoured foam set.



**Mirror**



**Base**



**Foam Set**

**Specifications:**

<b>Mirror Weight</b>	488 grams	<b>Mirror Material</b>	Polycarbonate
<b>Base Weight</b>	785 grams	<b>Base Material</b>	Polycarbonate
<b>Foam Set Weight</b>	242 grams	<b>Foam Set Material</b>	Polyurethane
		<b>Base Hardware Material</b>	Stainless Steel
<b>Adjustment Range, Height</b>	26.4 mm - approx. 1"		
<b>Adjustment Range, Horizontal</b>	40.0 mm - approx. 1.5"		

**Ordering Information:**

<b>10-520-00</b>	Prone Base and Mirror Set
<b>10-520-01</b>	Replacement Prone Mirror
<b>10-520-02</b>	Replacement Prone Base
<b>10-520-03</b>	Prone Contoured Foam Cushions (2/set, 5 sets per box)

**Accessories**

*Catheter Mounts*

**DM-3504**

**Description**

Superset straight catheter mounts

**Packaged**

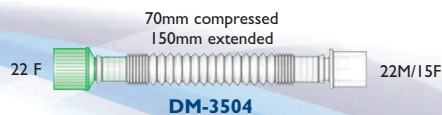
50/Box

*Flexible Catheter Mounts*

**DM-3511**

Flexible straight catheter mounts

50/Box



[www.mercurymed.com](http://www.mercurymed.com)